

**FLUKE®**

Test Equipment Depot - 800.517.8431 - 99 Washington Street Melrose, MA 02176 - TestEquipmentDepot.com

**SEE IT. SAVE IT. SHARE IT.**  
**All the facts, right in the field.**



**Introducing the largest system  
of connected test tools in the world.**

# Introducing the largest system of connected test tools in the world.

The Fluke Connect™ app and connectable tools are the most comprehensive way to stay in contact with your team without leaving the field. With over 20 connectable tools, confidently diagnosing and solving problems has never been easier.



Get started saving more time and increasing productivity now.

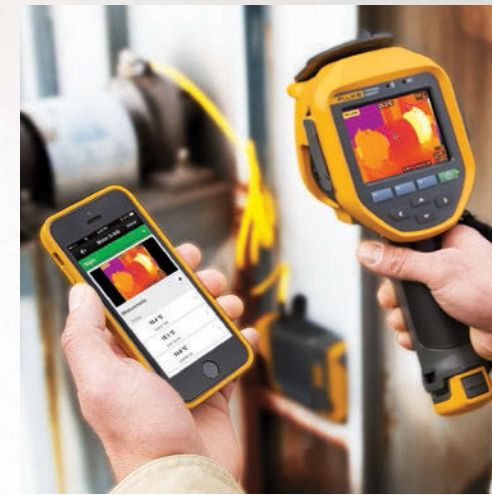


Compatible with iPhone 4S and up running iOS 7 or higher, iPad (in an iPhone frame on iPad) and Galaxy S4, Nexus 5, HTC One, running Android™ 4.4.x or higher.



## SHARE FROM ANYWHERE.

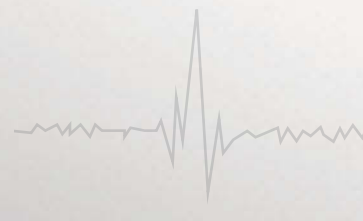
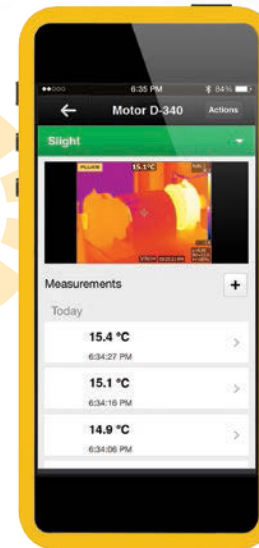
Stay on the same page even when you and your team are in different places, only with ShareLive™ video call. Securely connect and collaborate with others, so they can see what you see. Get approvals without leaving the field.



## SAVE TIME REPORTING.

Make better decisions faster than before. Organize your measurements by asset in one location with EquipmentLog™ history. Measure once, and cut out the paper with AutoRecord™ measurements.

When your measurements are associated with equipment, there is no need to record in the field and then transcribe into an office computer. Make decisions quicker than before by viewing temperature, mechanical, electrical and vibration measurements from one location.



## TROUBLESHOOT FASTER.

Instantly trend and monitor intermittent problems with TrendIt™ graphs so you can easily identify trends and stop problems before they happen. Seeing is believing—trend data over time and prove your point.



## LOCK DOWN YOUR DATA.

The Fluke Cloud™ storage infrastructure has been built to be one of the most flexible and secure cloud computing environments available today. Our cloud service provider uses state-of-the-art electronic surveillance, multi-factor access controls and 24/7 data center staffing to make Fluke Cloud one of the most flexible and secure cloud computing environments available.



## Who will use Fluke Connect™?

Industrial maintenance, facility maintenance, commercial facility teams, and contractors are especially interested in using Fluke tools with the Fluke Connect™ app.

### CUSTOMER TITLE:

Preventive Maintenance Technicians

### BENEFITS:

Reduce maintenance costs and increase uptime with accurate equipment records; eliminates the time spent traveling between the field and the office and transcribing measurement data

### APPLICATIONS:

- Equipment inspections using Fluke thermal imagers (Ti 1xx, 2xx, 3xx, 4xx) and meters (3000 FC series)
- Load studies using Fluke meters (3000 FC series meters)

### CUSTOMER TITLE:

Maintenance Technicians

### BENEFITS:

Allow different skill levels to collaborate more conveniently and remotely view measurements in energized cabinets for improved safety

### APPLICATIONS:

- Troubleshoot general equipment problems
- Load studies using Fluke meters (3000 FC series)

### CUSTOMER TITLE:

Technicians without Fluke Connect™ enabled tools

### BENEFITS:

Improve the efficiency of electrical and mechanical maintenance by accessing equipment records, manuals and other useful materials from a smart phone while in the field

### APPLICATIONS:

- Access product manuals
- Reference resources, such as application notes



## Read how some customers are using this new test tool system.

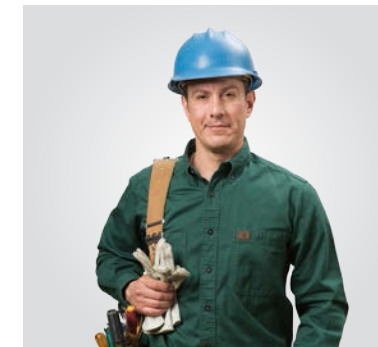


**Title: Instrumentation Electrical Supervisor**

**Industry: Cement Manufacturing**

Fluke Connect™ enabled test tools let me be in two places at the same time.

I manage the instrumentation involved in control, monitoring, and materials weight management systems and supervise electrical installations, maintenance, and upgrades within the manufacturing facility. The Fluke Connect™ app and enabled tools saves time and improves my ability to supervise. Being able to see what my technicians see in real time from my smart phone or tablet, lets me be in two places at once.



**Title: Signal Maintainer**

**Industry: Transportation**

Fluke Connect™ enabled test tools make my job easier by improving collaboration and safety.

I monitor and maintain the electric switches on the train tracks to keep the equipment running, reduce routine maintenance time, simplify operations, and maintain public safety.

With Fluke Connect™ it now takes only two of us, two weeks to perform quarterly checks on almost 30 pieces of equipment. Job safety is easily tripled because I spend two-thirds less time in proximity to high voltages. And once I install the meter I can get out of the way of moving trains while taking critical measurements.



**Title: Mechanical Technician Superintendent**

**Industry: Water Utility**

Fluke Connect™ enabled test tools make my job easier by giving my team faster answers without taking notes.

My team documents our measurements in the CMMS system, which now requires writing measurements in the field and typing them into the system. That's time consuming and creates the opportunity for mistakes.

With the Fluke Connect™ system we can record, organize and upload measurements in the field without carrying a clipboard or notebook. We can analyze and graph the measurement to assess and diagnose issues. I can also see measurements from my technicians in real-time on my smart phone and provide guidance.



**Optimize your Fluke Connect™ Experience with Kits**

Model	Description	Includes:
FLK-3000 FC GM	FC Wireless General Maintenance Kit	1 3000 FC DMM, 1 v3000 FC Wireless True-rms AC Voltage Module, 1 v3001 FC Wireless DC Voltage Module and 1 a3001 FC Wireless iFlex AC Current Module
FLK-3000 FC HVAC	FC Wireless HVAC System	1 3000 FC DMM, 1 a3000 FC Wireless AC Current Clamp Module and 1 t3000 FC K-type Temperature Module
FLK-3000 FC IND	FC Wireless Industrial System	1 3000 FC DMM, 3 a3001 FC iFlex AC Current Modules, 1 v3000 FC True-rms AC Voltage Module
FLK-A3000 FC KIT	FC Wireless Essential Kit with a3000	1 3000 FC DMM and 1 a3000 FC Wireless AC Current Clamp Module
FLK-A3001 FC KIT	FC Wireless Essential Kit with a3001	1 3000 FC DMM and 1 a3001 FC Wireless iFlex AC Current Module
FLK-T3000 FC KIT	FC Wireless Essential Kit with t3000	1 3000 FC DMM and 1 t3000 FC K-type Temperature Module
FLK-V3000 FC KIT	FC Wireless Essential Kit with v3000	1 3000 FC DMM and 1 v3000 FC Wireless True-rms AC Voltage Module
FLK-V3001 FC KIT	FC Wireless Essential Kit with v3001	1 3000 FC DMM and 1 v3001 FC Wireless DC Voltage Module
FLK-V3003 FC KIT	FC Wireless Essential Kit with AC+DC Voltage Modules	1 3000 FC DMM, 1 v3000 FC Wireless True-rms AC Voltage Module and 1 v3001 FC Wireless DC Voltage Module
FLK-TI400 60HZ/FCA	Ti400 IR Cam w DMM a3001 FC iFlex Kit	Ti400 Infrared Camera, 3000 FC DMM and 1 a3001 FC iFlex AC Current Module
FLK-TI400 60HZ/FCB	Ti400 IR Cam w 3 a3001 FC iFlex 805 FC Mtr Kit*	Ti400 Infrared Camera, 3 a3001 FC iFlex AC Current Modules and 805 FC Wireless Insulation Tester
FLK-TI300 60HZ/FCA	Ti300 IR Cam w DMM a3001 FC iFlex Kit	Ti300 Infrared Camera , 3000 FC DMM and 1 a3001 FC iFlex AC Current Module
FLK-TI200 60HZ/FCA	Ti200 IR Cam w DMM a3001 FC iFlex Kit	Ti200 Infrared Camera, 3000 FC DMM and 1 a3001 FC iFlex AC Current Module
FLK-TI125 30HZ/FCB	TI125 IR Cam w 3 a3001 805 FC Kit*	Ti125 Infrared Camera , 3 a3001 FC iFlex AC Current Modules and 805 FC Wireless Insulation Tester
FLK-TI105 30HZ/FCA	Ti105 IR Cam w DMM a3001 FC iFlex Kit	Ti105 Infrared Camera, 3000 FC DMM and 1 a3001 FC iFlex AC Current Module
Fluke-789 FC/T3000	Fluke Connect ProcessMeter/Temp Measure Kit	1 789 ProcessMeter, 1 ir3000 FC Connector and 1 t3000 FC K-type Temperature Module
1550C/KIT NA FC	5KV Insulation Tester Kit	1550C Insulation Resistance Tester and ir3000 FC 1550 Connector
1555/KIT NA FC	10KV Insulation Tester Kit	1555 Insulation Resistance Tester and ir3000 FC 1550 Connector

**Buy Individually**

Model	Description
FLK-3000 FC	FC Wireless Digital Multimeter
FLK-TI400	FLK-TI400 Infrared Camera
FLK-TI300	FLK-TI300 Infrared Camera
FLK-TI200	FLK-TI200 Infrared Camera
FLK-TI125	FLK-TI125 Industrial Infrared Camera
FLK-TI110	FLK-TI110 Industrial Infrared Camera
FLK-TI105	FLK-TI105 Industrial Infrared Camera
FLK-TI100	FLK-TI100 General Use Infrared Camera
FLK-TIR125	FLK-TIR125 Building Diagnostic Infrared Camera
FLK-TIR110	FLK-TIR110 Building Diagnostic Infrared Camera
FLK-TIR105	FLK-TIR105 Building Diagnostic Infrared Camera
Fluke-805 FC	Fluke Connect Vibration Meter*
Fluke 289	True-rms Industrial Logging Multimeter with TrendCapture
Fluke 287	True-rms Electronics Logging Multimeter with TrendCapture
Fluke 789	ProcessMeter™ with 250 Ohm HAT resistor
Fluke 1550c	Insulation Resistance Tester
Fluke 1555	Insulation Resistance Tester

**Modules**

Model	Description
FLK-A3000 FC	FC Wireless AC Current Clamp Module
FLK-A3001 FC	FC Wireless iFlex AC Current Module
FLK-A3002 FC	FC Wireless AC/DC Current Module
FLK-T3000 FC	FC Wireless K-Type Temperature Module
FLK-V3000 FC	FC Wireless True-rms AC Voltage Module
FLK-V3001 FC	FC Wireless DC Voltage Module

**Accessories**

Model	Description
FLUKE-IR3000FC	Connector, Infrared, FC for 189, 289, and 789 meters
FLUKE-IR3000FC1550	Connector, 1550 Infrared, FC for 1550B, 1550C and 1555 testers
FLK-FC-SD CARD	Fluke Connect Wireless SD Card for TI 1xx infrared cameras
FLK-PC3000 FC	FC Wireless PC Adapter for 3000 FC series meters

\*Coming soon

**Fluke.** Keeping your world up and running.®



All trademarks are the property of their respective owners. Smart phone, wireless service, and data plan not included with purchase. Compatible with Android™ (4.3 and up) and iOS (4s and later). Apple and the Apple logo are trademarks of Apple Inc., registered in the U.S. and other countries. App Store is a service mark of Apple Inc. Google Play is a trademark of Google Inc.

**Modification of this document is not permitted without written permission from Fluke Corporation.**

©2014 Fluke Corporation. Specifications subject to change without notice. Printed in U.S.A. 4/2014 6002557b-en